

This specification is published by [Erudus](#) for Dole Packaged Foods Europe B.V.

Dole® Tropical Gold Pineapple Tidbits in Juice

Can 3005g

Tropical Gold Pineapple Tidbits In Juice 6x3.005kg

PRODUCT DESCRIPTION

Canned pineapple Fancy tidbits in pineapple juice and are processed by heat in hermetically sealed containers.

| | |
|-----------------------------|----------------------------------|
| Brand | Dole Packaged Foods Europe B.V. |
| Label Own Label Code | 389000927623 |
| Manufacturer Version | 1 |
| Number | |
| Product Type | Food |
| Product Category | Other Fruit & Veg |
| Storage Type | Ambient |
| Erudus ID | e2cefe844d7a4ecdb521520bcf4cf4f2 |
| Specification Type | Fruit and Vegetables |
| Inner Component GTIN | 00038900092764 |
| Manufacturer Component Code | PID 11559 |



INGREDIENTS

Ingredient Declaration
PINEAPPLE, PINEAPPLE JUICE.

ALLERGENS

Product Contains:

| | |
|--------------------------------------|----|
| Celery/Celeriac | No |
| Cereals Containing Gluten | No |
| Barley | No |
| Oats | No |
| Rye | No |
| Wheat (including Spelt and Khorasan) | No |
| Crustacea | No |
| Eggs | No |
| Fish | No |
| Lupin | No |
| Milk | No |
| Molluscs | No |

| | |
|-------------------------------|----|
| Mustard | No |
| Nuts (Tree) | No |
| Almond nuts | No |
| Brazil nuts | No |
| Cashew nuts | No |
| Hazelnuts | No |
| Macadamia (Queensland) nuts | No |
| Pecan nuts | No |
| Pistachio nuts | No |
| Walnuts | No |
| Peanuts | No |
| Sesame Seeds | No |
| Soybeans | No |
| Sulphur Dioxide and Sulphites | No |

FREE FROM CLAIMS

| | | | |
|---------------------------|-----|---------------------------|-----|
| Free From Barley | Yes | Free From Mustard | Yes |
| Free From Celery/Celeriac | Yes | Free From Nuts | Yes |
| Free From Crustacea | Yes | Free From Oats | Yes |
| Free From Eggs | Yes | Free From Peanuts | Yes |
| Free From Fish | Yes | Free From Rye | Yes |
| Gluten-Free | Yes | Free From Sesame | Yes |
| Free From Lactose | Yes | Free From Soybeans | Yes |
| Free From Lupin | Yes | Free From Sulphur Dioxide | Yes |
| Free From Milk | Yes | Free From Wheat | Yes |
| Free From Molluscs | Yes | | |

SUPPLEMENTARY INGREDIENT INFORMATION

| | |
|--------------------------------|----|
| Palm Oil | No |
| Hydrogenated Vegetable Oil/Fat | No |
| GM Protein/DNA | No |

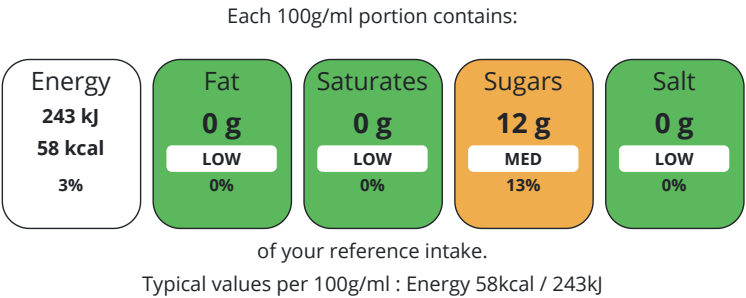
ADDITIVES

| | | | |
|------------------------------|----|--------------------------|----|
| Product Contains: | | | |
| Artificial Antioxidants | No | Artificial Flavourings | No |
| Artificial Colours | No | Artificial Preservatives | No |
| Artificial Flavour Enhancers | No | Artificial Sweeteners | No |

DIET SUITABILITY

| | | | |
|------------|--------------|-----------------|--------------|
| Vegan Diet | Suitable for | Vegetarian Diet | Suitable for |
| Halal Diet | Certified | Kosher Diet | Certified |

NUTRITIONAL INFORMATION AS SOLD



| Nutrient | per 100g | RI per 100g |
|---------------------------|----------|-------------|
| Energy (kJ) | 243 kJ | 3% |
| Energy (kcal) | 58 kcal | 3% |
| Fat | 0 g | |
| of which Saturates | 0 g | |
| of which Mono-unsaturates | 0 g | |
| of which Polyunsaturates | 0 g | |
| Carbohydrate | 13 g | 5% |
| of which Sugars | 12 g | 13% |
| of which Polyols | 0 g | |
| of which Starch | 0 g | |
| Fibre | 1 g | |
| Protein | 0 g | |
| Salt | 0 g | |
| Sodium | 0 mg | |

Source of Nutritional Information Manufacturers analysis

SUPPLEMENTARY
NUTRITIONAL
INFORMATION

| | |
|--|-----|
| Cholesterol per 100 g/ml (UK/FR) | 0 g |
| Trans Fats per 100 g/ml | 0 g |
| Fat Percentage in Dry Matter per 100 g/ml | 0 % |
| Non Milk Extrinsic Sugars per 100 g/ml | 0 g |

HFSS (HIGH IN
FAT, SALT AND
SUGAR)

| | |
|--------------------|----|
| HFSS Status | No |
| HFSS Score | -4 |

HANDLING &
STORAGE
INFORMATION

Directions For Use

Ready to consume immediately or included as a part of sweet or savory recipe

Storage Instructions

STORE AT AMBIENT IN COOL DRY AREA

Storage Instructions After Opening

REFRIGERATE CONTENTS IN A GLASS OR PLASTIC CONTAINER AND CONSUME WITHIN 3 DAYS

| | |
|---|-----------|
| Shelf Life from Time of Production | 1095 Days |
| Shelf Life From Opening | 3 Days |

ORIGIN

| | |
|---|-------------------|
| Product Country of Origin | Philippines (the) |
| Origin of the Primary Ingredient | Philippines (the) |

PRODUCT
CHARACTERISTICS

| | |
|--|-----|
| Standards Testing | |
| Is shelf life testing undertaken? | Yes |
| Commercially Sterile | Yes |

SUPPLEMENTARY INFORMATION

| | |
|---------------------------------|----|
| Fried During Manufacture | No |
|---------------------------------|----|

ORGANOLEPTICS

Appearance

Typical yellow color of the pineapple variety. There may be slight variations in shades of color within each unit and among units without materially affecting product appearance or edibility.

Aroma

Characteristic of ripe, mature pineapple with no noticeable odor.

Taste

Characteristic of ripe, mature pineapple with no noticeable off-flavor.

Texture

Practically free from blemishes, mashed, broken pieces and other abnormalities which contrast strongly in color and texture of normal fruit tissue.

CONFIGURATION

| | |
|---|--------------------------|
| Case Configuration | Inner Pack Configuration |
| Variable Inner Components in Outer Case | No |
| Total Quantity of Inner Components in Outer Case | 6 Units |
| Is the Outer Case Splittable? | Yes |

PRODUCT WEIGHTS

| | |
|-------------------------------|----------|
| Inner Component | |
| Variable Weight Consumer Item | No |
| Inner Component Weight | 3.005 kg |
| Net Drained Weight | 1.86 kg |
| e mark | Yes |
| Outer Case | |
| Outer Case Gross Weight | 20.41 kg |
| Outer Case Net Weight | 18.03 kg |

PRODUCT DIMENSIONS

| | |
|--------------------------|--------|
| Inner Component | |
| Inner Component Depth | 157 mm |
| Inner Component Width | 157 mm |
| Inner Component Height | 177 mm |
| Inner Component Diameter | 157 mm |
| Outer Case | |
| Outer Case Depth | 470 mm |
| Outer Case Width | 314 mm |
| Outer Case Height | 177 mm |

PALLET INFORMATION

| | | | |
|------------------------------------|----------|---------------------|--------------------|
| Quantity of Cases Per Pallet Layer | 8 Cases | Pallet Type | UK Standard Pallet |
| Quantity of Layers Per Pallet | 6 Layers | Pallet Height | 1.21 MTR |
| Quantity of Cases Per Pallet | 48 Cases | Pallet Gross Weight | 1006.5 kg |

PACKAGING

| Inner Component Packaging | | | | | | |
|---------------------------|-----------------|----------|--------------------|------------|------------|-----------|
| Type | Materials | Weight | Recycled Plastic % | Recyclable | Returnable | Composite |
| Can | Steel | 325.84 g | - % | Yes | No | No |
| Outer Case Packaging | | | | | | |
| Type | Materials | Weight | Recycled Plastic % | Recyclable | Returnable | Composite |
| Tray | Paper/Cardboard | 350 g | - % | Yes | No | No |

SAFETY & WARNINGS

OTHER INFORMATION

| | |
|--|------------|
| Commodity Code | 2008209000 |
| Manufacturer Comments | |
| Case EAN 05438900092767 Best before format MM YYYY NDC EXS DSS | |

CONTACT INFORMATION

| ADDRESS |
|---|
| Dole Packaged Foods Europe B.V. Unit 2A Weena 200 Rotterdam 3012NJ Netherlands (the) |

P: (Phone) 0031682245100

The information on the [Erudus System](#) has been supplied by the manufacturers of the products and, whilst the owners of the Erudus System take steps to ensure the information is regularly updated, they give no warranty and no guarantee that the information is accurate. Product information and ingredients may change, please always read product labels carefully in addition to using the information provided by Erudus.

We do not accept liability for any inaccuracies or incorrect information contained on this site.
Please visit <http://www.erudus.com/terms-and-conditions> for full terms and conditions.